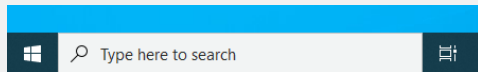


TASK VIEW

Task View is located next to the Windows 10 Search Box, identified as a filmstrip type icon. It incorporates both the Task View and Timeline features.

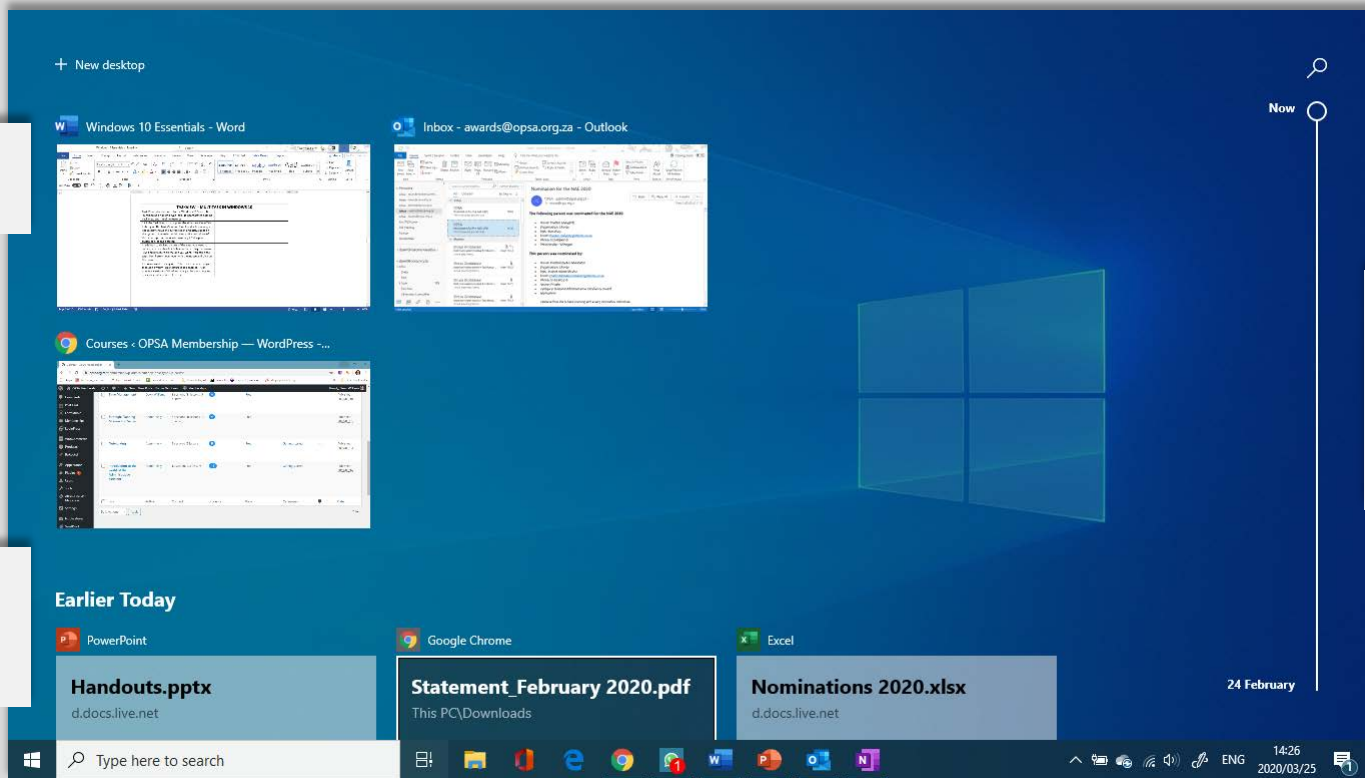


Click the Task View icon or press the Windows Key + Tab to bring up the Task View and Timeline display manager. The display shows the current open and active apps on the system. It remains in this view until you click on one of the active apps or press Windows Key + Tab again to switch back to the desktop.

In addition to clicking on one of the apps you want to launch, you can also flick between them using the arrow keys and hit return on the one you want. You can close apps from here – hover over with the mouse and click on the cross.

If you are used to using Alt + Tab to flick between apps then don't worry. This feature is still enabled in Windows 10. As in previous versions of Windows, it is just for switching and does not enable you to close them.

Windows that are currently open.



Documents that you had viewed/created earlier in the day and have closed.

Timeline scrollbar – if you scroll using the timeline, you will get a history of past document and windows that you have opened.